

AUSTAL PATROL 56



"ARMIDALE CLASS PATROL BOAT"

YARD NO: 321 - 334

DESTINATION: AUSTRALIA

DELIVERED: MID 2005 - 2007

CLIENT: ROYAL AUSTRALIAN NAVY

PRINCIPAL DIMENSIONS

Length overall	56.8 metres
Length waterline	52.1 metres
Beam (moulded)	9.5 metres
Depth (moulded)	5.0 metres
Hull draft (maximum)	2.7 metres

MANNING

Officers	7 (including Commanding Officer)
Senior sailors	4
Junior sailors	18
Total compliment	29

ACCOMODATION

Officers	Single berth CO's cabin, 3 x 2 berth cabins
Senior sailors	2 x 2 berth cabins
Junior sailors	1 x 2 berth cabins, 4 x 4 berth cabins
Austere accomodation	20 berth

ARMAMENT

Primary weapon	25mm Rafeal Typhoon MK25 stabilised naval gun
Secondary weapons	2 x 12.7mm M2HB heavy machine guns

COMMUNICATION & SENSORS

Communication system	CEA Integrated Ships Communication System (CEA-ISCS)
Direction finding system	CEA Warrlock

ADDITIONAL FEATURES

Sea boats	2 x 7.24 metre RIBs
Motion control system	Seastate 2 x active roll fins, +2 x active transom flaps

PROPULSION

Main engines	2 x MTU 16V 4000 M70 2 x 2,320 kW @ 2,000 rpm
Gearboxes	2 x ZF 7550 A
Propellers	2 x fixed pitch
Bow thruster	160 kW



PERFORMANCE

Speed	Maximum	>25 knots
	Loiter	4 - 10 knots for 60 hours
Fuel consumption		0.9 tonnes/hour
Range		3,000 nautical miles

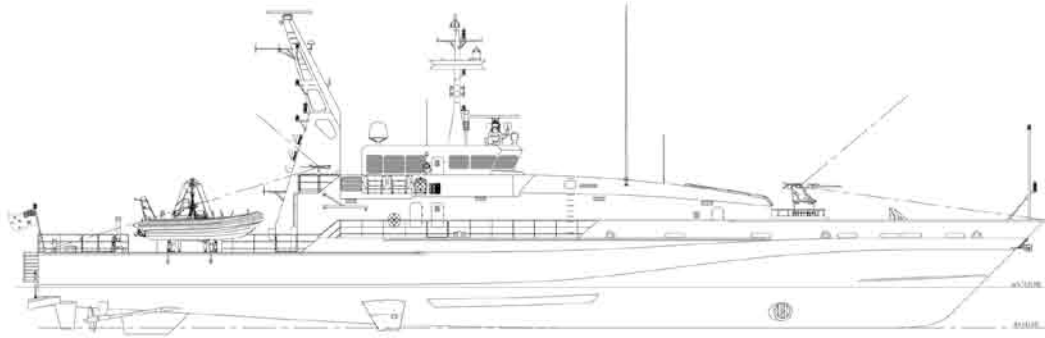
CLASSIFICATION

Det Norske Veritas
 ✘ 1A LC Naval Support Patrol EO
 NAUT NV CRANE (aus)

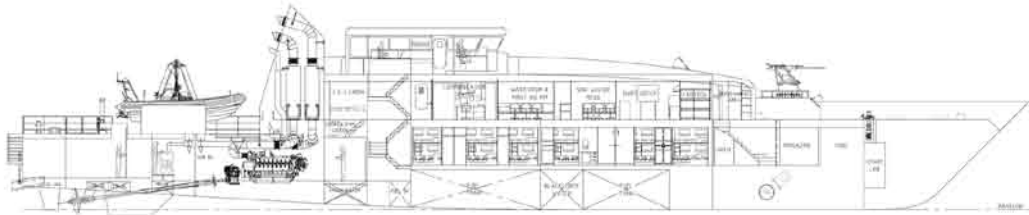
AUSTAL PATROL 56

Vessel type: 56m Aluminium Patrol Boat

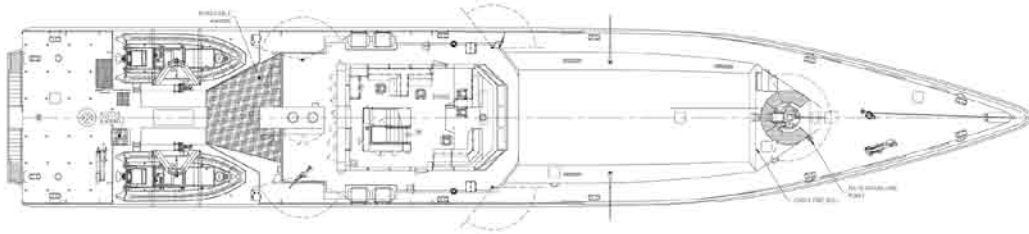
PROFILE



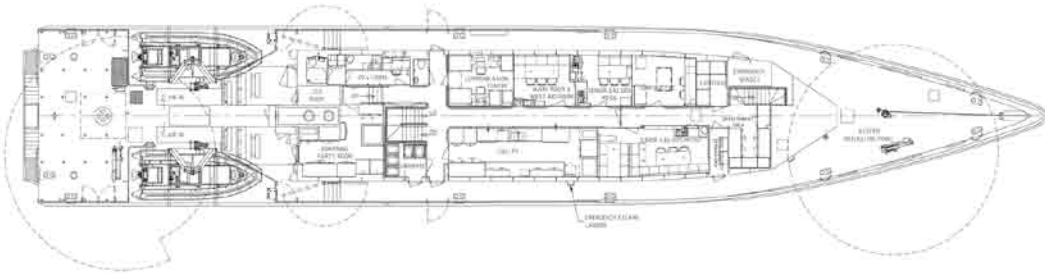
PROFILE @ CENTRELINE



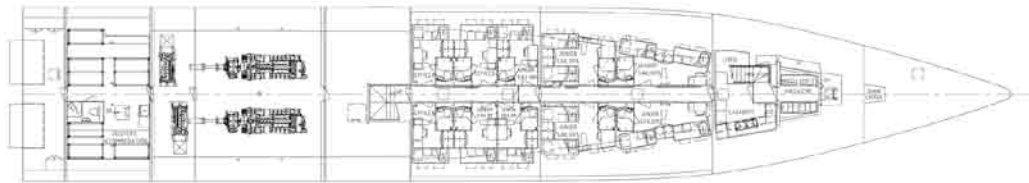
BRIDGE DECK



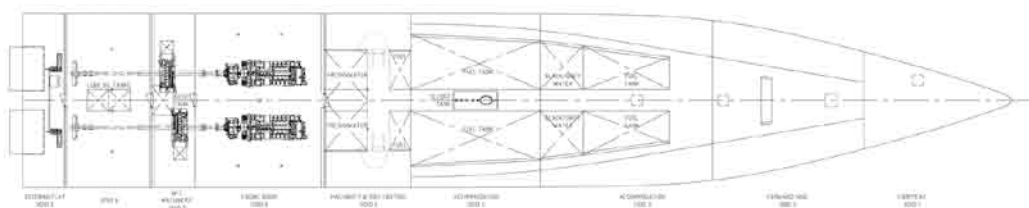
MAIN DECK



LOWER DECK



HULL



"ARMADALE CLASS PATROL BOAT"

YARD NO: 321 - 334

DESTINATION: AUSTRALIA

DELIVERED: MID 2005 - 2007

CLIENT: ROYAL AUSTRALIAN NAVY

100 Clarence Beach Road
Henderson
Western Australia 6166

Tel +61 8 9410 1111
Fax +61 8 9410 2564
sales@austal.com
www.austal.com

